



# Crofton School E-Learning Newsletter

AUTUMN TERM *November 2011, Issue 2*

*Edited by Mr Ciaran O'Dowda  
(Deputy Headteacher)*

*Created & produced by Mrs Howden*

School will continue to look for opportunities beyond: our website, emailing parents, our VLE, SERCO etc., to keep parents much better informed about their children's learning and achievements. We also continue to encourage parents to let us know how we can use technology to improve communication.

The recent death of Steve Jobs (CEO of Apple inc.) prompted me to reflect on the massive change, not only in Apple's fortunes but also on the educational context we all live in. His company and many others like it have shown that IT is not just for geeks, it's for real people! Systems now connect to one another seamlessly, at greater speed, wireless is reliable and users can access their digital lives just about anywhere. We use the technology precisely because we know it can do what we want.



So now we have the technology to put creative tools in everyone's hands. This gives us a real challenge in education because we want our learners to explore and discover what is out there but there are necessary restrictions so that we can manage it easily and securely.

Like any good learning opportunity, it comes down to understanding how an individual learns best, where he or she is heading, and what he or she has achieved. It's the same as any other type of learning resource.

Steve Jobs once said '...it's technology married with liberal arts, married with the humanities, that yields us the result that makes our hearts sing'. So let's remember that technology cannot replace the paint pot, football, or science practical, but it does enhance each learner's ability to share, to explore and to create. The big question we routinely ask ourselves is 'what can I do to help my learners get the most from technology, but not be a slave to it?'

Mr O'Dowda  
Deputy Headteacher

## News

Since the last issue (Spring 2011), the incoming Year 10 students were given the opportunity to purchase netbooks for learning through the school. I am delighted to say that over 80% of our students at Key stage 4 now have netbooks and are actively using them in lessons and at home. As I move around the school each day, it is really wonderful to see our Year 10 and 11 students engaging with their learning in new and interesting ways, thanks in no small part to these devices. What is most striking and encouraging is that these students are demonstrating more independent approaches to their learning. Many students too, are submitting better quality controlled assessment, class work pieces and homework because they prefer more opportunities for creativity, editing and improving their work that netbooks are easily able to offer.



exciting and uncertain. It is hard to clearly predict how a school of the future might look. However, some clearer aspects are emerging nationally:

- Research into neurology is showing that children and adult learning approaches are changing as the use of technology in our lives becomes ever more ubiquitous. Good teaching approaches should continue to explore how technology can maintain the excellence of teaching and extend it. At Crofton School, our staff training programme is based on staff sharing their best practice and use of technological innovations with each other.
- Developments in technology mean that it is now common in schools for the majority of students to carry their own smart phones. With internet capable phones becoming commonplace and phone companies giving unlimited bandwidth in phone packages, student ownership of such devices will rapidly extend. The impact of enabling students to use their own phones and personal technology devices in their learning has been shown to be high in a number of pilot studies worldwide. We realise this is a highly complex introduction to envisage occurring in practice. So, Crofton School, like all other schools, is eager to receive clear government guidance and regulation.
- Parental engagement through technology is growing rapidly in schools. This impacts very positively on students' engagement with school and on their behaviour and is much appreciated by parents. Crofton



Also this year we have changed our VLE from Studywiz to Moodle. Students and teachers alike prefer this move as Moodle is much more of an intuitive and user-friendly learning platform. Parents are urged to find out from their children exactly how they are using Moodle, especially regarding the setting and completion of homework. You can read in this newsletter more about Moodle from Mr Whitehouse, ICT subject leader.

The school continues to try and keep abreast of technological advancements related to learning. The future role of technology in schools continues to be debated,

## Ten Facts about Steve Jobs (1955-2011)



1. He saved Pixar. Jobs purchased the company from George Lucas' Lucasfilm for \$5 million in 1986. The first film produced by Pixar under Jobs was the critically acclaimed "Toy Story".
2. He was Disney's largest shareholder: He became Disney's largest shareholder when the company bought Pixar in 2006.
3. He was dyslexic.
4. He was obsessed with calligraphy and type fonts.
5. His daily uniform: St Croix black cashmere/slim turtleneck sweater, Levi blue jeans (he owned 100 plus pairs) and new balance trainers, size 14.
6. He was a pescetarian.
7. His salary: \$1 as a CEO of Apple, \$48 million annual income from Disney shares.
8. He was a prankster. He once used his iPhone to order 4,000 lattes from Starbucks. He left snakes in classrooms whilst at school.
9. He didn't believe in market research and boasted that 'Apple just makes great products'.
10. He named the company 'Apple' because he loved apples and the Beatles.

## Internet Safety

In the last issue parents were encouraged to look at the 'Thinkuknow' website for all matters relating to internet safety. This site has been updated and is definitely a must for parents wishing their children to get the very best out of the internet.



## Moodle

One of the most exciting ICT developments we have had this year is the launch of our new Virtual Learning Environment, [croftonschoolvle.org](http://croftonschoolvle.org). Most subjects are now using the VLE called Moodle, although it is still often necessary to use paper and books in many subjects.

This new service provides students with a password-protected safe and secure website that allows them to:

- Access their school files from any internet enabled device
- Get copies of notes and resources from lessons, from word documents to pictures and videos, and interactive quizzes
- Check what homework they have pending, and when it is due
- Submit homework to teachers from home
- Communicate with other students at the school, and staff, through forums and the chat service

The student's response to the new site has resoundingly positive. One of the most popular features with key stage three students has been the messaging service, with many of them seeing it as a safe alternative to Facebook, allowing them to communicate with each other in and out of school without having to worry about strangers! However, a small number of students have felt the need to use this service during lessons, which is not appropriate without the teacher's permission. This facility will be made unavailable to any students who persist in using it without permission.

For parents, we hope that the VLE will allow you to quickly and easily see if your child has any work due or outstanding. Teachers can also use the VLE to mark work, allowing you and the students to get feedback on the work before the next lesson. Hopefully, this will help see what you can do to help your child to make the best possible progress they can.

Teachers can place detailed lesson notes, handouts and resources for the students to access, allowing students to see what they are doing, remind themselves of a topic to help with homework, and see what they have missed if they are absent.

Finally, students can also use the VLE to store files to transfer them between school and home, hopefully solving the problem of getting work without having to print or use a USB memory stick that can very easily be lost.

Every student has their own unique login, allowing them to feel safe and confident that we can monitor activity and identify any risks or problems.

Mr Whitehouse (ICT/BS subject leader)



## Popular Websites

The following interesting and learning websites have been recommended by students and teachers. They are all free and can be used in school and at home.

[www.wordle.net](http://www.wordle.net)

Wordle is a toy for generating "word clouds" from text that you provide. The clouds give greater prominence to words that appear more frequently in the source text. You can tweak your clouds with different fonts, layouts, and color schemes. The images you create with Wordle are yours to use however you like. You can print them out, or save them to the Wordle gallery to share with your friends.

[www.voki.com](http://www.voki.com)

Voki is a free service that allows you to create personalised speaking avatars and use them on your blog, profile, and in email messages. Voki has been used in school as an educational tool as well.

[www.glogster.com](http://www.glogster.com)

Poster yourself - make your interactive poster easily and share it with friends.

<http://goanimate.com/>

GoAnimate is a fun app that lets you make animated videos, for free, in just ten minutes, without having to draw. You can even create your own cast of characters.

[www.amathsdictionaryforkids.com](http://www.amathsdictionaryforkids.com)

This does what its name suggests and is interactive too.

<http://www.nationalgeographic.com/>

The National Geographic website provides free maps, photos, videos and daily news stories, as well as articles and features about animals, the environment, cultures, history etc.

<http://kids.nationalgeographic.com/kids/>

The 'kids' version features different people, animals, and places each month with facts, games, activities, and related links.

<http://apod.nasa.gov/apod/archivepix.html>

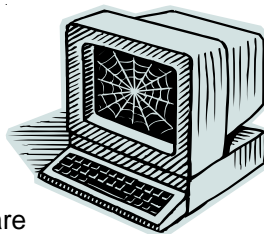
Astronomy picture of the day - a different astronomy and space science related image is featured each day, along with a brief explanation.

<http://practicalaction.org/>

This charity provides practical solutions to life-threatening problems all over the world. It has a good education section too. The section called 'practical answers' is particularly relevant to many school studies.

<http://www.worldometers.info/>

Interesting live world statistics on population, government and economics, society and media, environment, food, water, energy and health. This website has been widely used in school but continues to be a source of useful discussion and reflection.



## Social Networking Sites



facebook

Sites like Facebook, MySpace and Bebo are becoming incredibly popular with young people and most use them sensibly. The sites are easily available, not just through computers, but through a range of hand-held devices too. Students are blocked from the distraction of obtaining access to these sites on the school network. Students are also not allowed to use their mobile phones whilst on the school site. Therefore, all students should never have access to social networking sites whilst in school.

Parents should become familiar with how social network sites and chat rooms operate. After looking at any of the following websites, parents and their children should be able to have a better informed and hopefully open discussion about the various 'dos and don't's'.

<http://www.childline.org.uk/explore/online/safety/pages/socialnetworking.aspx>

[http://www.getsafeonline.org/nqcontent.cfm?a\\_id=1459](http://www.getsafeonline.org/nqcontent.cfm?a_id=1459)

<http://www.commonsense.com/internet-safety-guide/social-networking.php>

<http://www.safetyweb.com/social-networking-safety-tips>

<http://www.safetyweb.com/social-networking-safety-tips>

<http://www.safetyweb.com/social-networking-safety-tips>

<http://www.safetyweb.com/social-networking-safety-tips>

---

Coming soon . . . .

Crofton School  
presents:

# ST TRINIANS

7:00PM ON;

WEDS 28<sup>TH</sup> MARCH

THURS 29<sup>TH</sup> MARCH

FRIDAY 30<sup>TH</sup> MARCH

PLEASE DO COME ALONG! TICKETS WILL BE AVAILABLE SOON.



## Netbook reminders to students

All students should read the guidance that was issued with their netbook. Generally speaking, our students abide by the rules and guidelines brilliantly. I have picked out three important reminders:

1. Students should bring their netbooks to school **every day**, fully charged.
2. Look after your netbook. If you have not done so already, we recommend you purchase a protective case or skin - it makes a big difference to the life of the device. Obviously do not throw your bag around with the netbook inside!
3. Try to remember to turn your netbook on soon after you get into school to allow it to 'synchronise' after it has been at home overnight. By doing this, there will be no delay at the start of your first lesson.



## Technology Winter Wonderland Workshop

Are you a parent of a Year 9 student? Is your son/daughter considering Graphics or Resistant Materials for GCSE?

Come along with your son/daughter and join us in our Technology Winter Wonderland Workshop on December 8th from 6:00 - 8:00pm. You will have the opportunity to design a Christmas decoration using 2D design software and manufacture it using our state of the art laser cutter.

Mince pies and drinks will also be served.

If you would like to attend, please send an email FAO Miss Tyler to : [school@crofton.hants.sch.uk](mailto:school@crofton.hants.sch.uk) indicating how many people will be attending. Places are limited and will be offered on a first come first served basis.

## E-Learning Across the School

### Maths

In maths we are finding many uses for the netbooks including reinforcing knowledge and learning through the Mymaths website and have begun to use Moodle to help set classwork and homeworks. We are finding new ways to use the netbooks on a weekly basis and they are a means of instant access to the wealth of interactive sites on the web.

In GCSE Statistics, both Year 10 sets have been using their netbooks, not only in lessons but also as an integral part of their practice controlled assessments.

<http://www.cut-the-knot.org/>  
<http://www.mymaths.co.uk/>  
<http://www.kangaroomaths.com/index.php>  
[http://www.mangahigh.com/en\\_gb/](http://www.mangahigh.com/en_gb/)  
<http://www.emaths.co.uk/>  
<http://www.bbc.co.uk/schools/gcsebitesize/maths/>  
<http://www.mathsisfun.com/>



### Media Studies

In Media Studies, we use ICT a lot as we are based in an ICT room. However pupils are able to carry on with work at home on their netbooks. The pupils are able to word process their analysis and they are able to use Photoshop Elements to manipulate images to create the DVD covers, which is a project we cover. The pupils can also use their netbooks to research the various tasks set. They also use their netbooks to analyse the music videos and websites that are required as part of assignment two.

For assignment three they will be creating and recording their own radio show, for which they will use Moviemaker to edit their recording.

#### **Moodle:**

The pupils can access Moodle which has all of the resources used in lessons for all of the projects studied. The Moodle page also has information about the up coming exam on 'Crime Television' and some useful links that will help with their research.

#### **Essential websites:**

AQA exam board website for GCSE

#### **Useful websites:**

[http://www.bbc.co.uk/learning/subjects/media\\_studies.shtml](http://www.bbc.co.uk/learning/subjects/media_studies.shtml)  
Crime television show websites

### English



Recently in English, students have been using the netbooks to collate notes, research relevant ideas, access resources from pupilwork or from the Moodle, and film and edit oral or visual responses to the texts they have studied. They are also useful for more straightforward word-processing tasks, and in particular for controlled assessment work. For the vast majority of English controlled assessments, students can now opt whether to handwrite or word-process their essays and the netbooks have made this possible.

During the summer exams students could use their netbooks at home to access the English Facebook Revision site to support their preparation on Of Mice and Men and the Unseen Poetry, and lots of resources are now available to Year 10 and 11 on the new school Moodle site, including links to external sites offering helpful tools or content.

#### **Essential websites:**

WJEC exam board website for GCSE

#### **Useful websites:**

Crofton English group on the Facebook site  
BBC Bitesize for KS3 and 4  
[www.bbc.co.uk/skillswise](http://www.bbc.co.uk/skillswise)  
<http://www.gcse.com/english/>

# E-Learning Across the School

## Drama



ICT is used extensively as a research tool in drama, especially for 'social context' and as support for homework.

GCSE drama students are using netbooks frequently, not only for note taking, research and evidence writing, but also for access to Moodle (see below) where they can make use of the extremely useful forum exchange which we are beginning to use regularly. In addition to this lesson, outlines and guidelines for the various writing pieces are also posted as well as homework. Useful links are incorporated on this facility.

Furthermore, owing to coursework having to be completed under controlled conditions, netbooks have allowed students to have ICT access in lessons which is having a positive impact on using time more effectively. Drama would highly recommend students investing in netbooks, if they are undertaking the drama GCSE option.

### **Moodle:**

In addition to GCSE information, students in KS3 will find their homework on Moodle along with suggestions or appropriate websites.

### **Websites:**

There is a wide range of websites for drama research, especially for those students who wish to research theatre practitioners. For coursework preparation, GCSE Bitesize is a useful site.



## Music



We mostly use netbooks in music to look at music clips that exemplify certain terms.

### **Moodle:**

Students have easy access to our revision guide on Moodle.

The very important AQA website address is:

<http://web.aga.org.uk/index.php>

## Dance



ICT is used in GCSE Dance in a number of ways. In practical lessons, it allows students to view back their filmed performances immediately, thus gaining individual feedback which enables them to improve their work quickly and accurately. It is also used to enable students to view movement material from the prescribed professional works which are used as starting points for various creative pieces.

Netbooks are used in the majority of theory lessons. It allows the students to access further information on the internet relating to the professional works and different styles of dance.

### **Moodle:**

A number of resources for practical lessons, assessment guidance and various homeworks can be accessed on Moodle. Lesson PowerPoints and lesson worksheets are also placed on Moodle for students to access and use for exam revision. This is updated on a very regular basis.

### **Useful Websites:**

<http://www.rambert.org.uk/>  
<http://www.brb.org.uk>  
<http://www.siobhandavies.com/>  
<http://www.houstonballet.org/>  
<http://www.matthewbournesnutcracker.com/>  
Google Images

## Art



ICT is extremely helpful in art as a research tool for collecting images, and researching artists and themes. At KS4, netbooks are used to very good effect for this purpose, and the Art Department recently purchased two new laptops and a wifi printer for student use from funds very kindly received from the Student Council.

### **Moodle:**

All KS3 projects are set on Moodle and can be easily accessed and/or printed off and for each project for each year, there are a range of resources including images, examples and links to other sites where you can research further. KS4 also includes many links and resources for each project, and details of the Year 11 mock exam can also be found on Moodle, with links to slideshows etc. on the artists and themes to aid students.

### **Useful Websites:**

Google images  
[www.artfactory.com](http://www.artfactory.com)  
[www.artcyclopedia.com](http://www.artcyclopedia.com)  
[www.morguefile.com](http://www.morguefile.com)

## PE



Note to all GCSE PE students - netbooks are required in **all** theory lessons. Please ensure that you have them ready for use. Please make sure you look at Moodle to find additional resources and activities to help you.

### **Useful websites:**

[www.the-fitness-motivator.com](http://www.the-fitness-motivator.com)  
[www.brianmac.co.uk](http://www.brianmac.co.uk)  
[www.bbc.co.uk/schools/gcsebitesize/pe/](http://www.bbc.co.uk/schools/gcsebitesize/pe/)  
These are all really useful sites. The first two are mostly about methods and testing of training. The BBC website has a whole range of topics to revise from.

# E-Learning Across the School

## Business Studies

In business studies, the students frequently need to find real examples of issues faced by a range of businesses, both here in the UK and overseas. The internet acts as a useful research tool, to bring real-life scenarios into the classroom. In addition, we make use of technology in a number of different ways to enhance the learning experience:

**On-line text books** – We subscribe to Edexcel's recommended textbook, which can be accessed by every student over the school's network. In addition to text, the book also includes videos and on-line tests to help check progress.

**Business related websites** – We use a range of business sites to access materials, case studies and relevant articles. These include; [www.Bized.co.uk](http://www.Bized.co.uk) and [www.bbcbitesize.co.uk](http://www.bbcbitesize.co.uk)



**Business simulations** – Students learn how the stock market works, and invest in companies they have selected, hoping the value of their "notional portfolio" will rise. For this we use an investment simulation that is linked to the London stock exchange, called [www.Bullbearings.com](http://www.Bullbearings.com)

**Bringing Business into the classroom** – Try as we do, it is not always possible to take students out to visit businesses or bring business representatives into the classroom. Therefore, to provide that sense of what it is really like in the world of commerce, students access a range of video clips through [www.youtube.com](http://www.youtube.com) that provide commentary and a birds-eye view of life in industry.

**Homework** – The majority of the homework set for students is available on the schools VLE, with the option of submitting the homework on-line and receiving feedback and marks via the VLE.

## Technology

### Key Stage 3

In KS3 we encourage students to use ICT to help develop their research and analysis skills. Moodle is proving to be an excellent tool in spanning the gap between work carried out during lessons and that done at home, allowing students to be far more independent.

We have introduced a Computer Aided Design and Manufacture (CAD/CAM) module into Year 7/8 and Year 9. Here students work in our dedicated workshop, learning how to use 2D design software, then see their design work manufactured on our laser cutting machine.

### Key Stage 4

Students are encouraged to use their netbooks regularly for a variety of tasks, most notably during controlled assessments where it provides a high quality finish to students' work.

The use of the laser cutter (mainly in Resistant Materials and Graphics) has had a huge impact on the quality of the products students make and provides them with a greater understanding of product design and manufacture in the 21<sup>st</sup> Century.

### Useful websites:

GCSE Bitesize  
[www.samlearning.com](http://www.samlearning.com)  
[www.nutrition.org.uk](http://www.nutrition.org.uk)  
[www.technologystudent.com](http://www.technologystudent.com)

## Science

In science, students mostly use ICT to research topics, prepare presentations and to collect primary data through data loggers.



Netbooks are used in science lessons to record lesson notes, carry out research and prepare presentations. Classroom use has been expanding exponentially over recent months; more and more lessons are being uploaded to Moodle for pupils to complete tasks online and save them to their own areas for future use.

### Moodle:

All of the homework at KS3 is out on Moodle and most of KS4 homework is delivered through e-learning. Instructions for students for GOAL online assessment is delivered to all students using Moodle.

### Essential websites:

<http://www.bbc.co.uk/schools/gcsebitesize/science/aqa/>  
<https://www.samlearning.com/>  
<http://www.goalonline.co.uk/>

### Useful websites:

AQA website is great for past papers:  
<http://web.aqa.org.uk/qual/newgcse/science.php?id=03&prev=03>  
[www.docbrown.info](http://www.docbrown.info)



# E-Learning Across the School

## PDL

Key Stage 4 students have been using their netbooks in PDL to great effect so far this term.

In Year 10 the students have spent a series of lessons researching various careers that interest them and putting together presentations to show the rest of their class. The sort of information gathered and presented has included main duties, desirable skills and qualities in an applicant, entry requirements and progression opportunities once in a particular career.

In Year 11 the main use of netbooks revolved around the students producing a personal profile (sometimes called a personal statement). This has involved producing a document that highlights their skills, qualities, areas for development, interests and career ambitions. This is intended to be used when they send applications to colleges and/or training providers and will enable the students to give the various providers a better insight into the sort of person they are above and beyond their grades.

### **Useful websites:**

[www.brook.org.uk](http://www.brook.org.uk)

sex and relationships information/advice

[www.getiton.nhs.uk](http://www.getiton.nhs.uk)

local sexual health services guide

[www.739sense.co.uk](http://www.739sense.co.uk)

local sexual health and contraception advice

[www.talktofrank.com](http://www.talktofrank.com)

drugs advice

[www.drinkaware.co.uk](http://www.drinkaware.co.uk)

facts and advice about alcohol

<https://nextstep.direct.gov.uk>

careers advice

<http://www.careersbox.co.uk>

career video profiles

<http://www.careerplayer.com>

graduate career video profiles

<http://www.direct.gov.uk/en/EducationAndLearning/14To19/OptionsAt16/index.htm>

for post 16 advice



## History

History has created the option of e-booklets for students to complete their studies of USA 1919-41 (Yr. 10) and British Depth Study 1890-1918 (Yr. 11).

Also, in addition to using the netbooks as research and presentation tools, we have used them to assist with lessons that focus on interpretations. They are also proving to be very useful for reflecting on and analysing written answers with reference to the mark schemes. We anticipate using flip-cams and dictaphones more and movie-maker to demonstrate different views of the same event(s) and people.

Year 10 students will find the netbooks extremely useful in the spring term as a means of collecting and organising a mass of information related to their controlled assessment.

## RE



This term, netbooks at KS4 have come into their own with the students studying R.E. at GCSE. These have enabled the students to develop good independent and autonomous learning habits especially relating to a variety of research tasks. This has been preceded in KS3 with research into Buddhism and pilgrimage in Islam.

Students have been connecting to cameras through the internet, watching pilgrims at the Western Wall in Jerusalem and Lourdes in France and having virtual tours of places of worship. Netbooks help to make events come alive.



### **Some useful websites are :**

[reonline.org.uk](http://reonline.org.uk)

[bbc.co.uk/religion/religions](http://bbc.co.uk/religion/religions)

[www.aish.com](http://www.aish.com)

[www.myjewishlearning.com](http://www.myjewishlearning.com)

## MFL

Every Lesson Counts...  
Jede Stunde zählt  
Chaque leçon compte

Two websites to encourage MFL "exploration of websites":



<http://www.commeaucinema.com/>  
French cinema site with clips to watch, reviews etc.

<http://www.tagesschau.de/kinder/>  
To view news in German. Really good if you scroll down on the right and go to "Minitz" where news are read to you and you can see the text. It also comes with a quiz at times.

# E-Learning Across the School

## Geography



ICT is an important part of geography and students use computers for a number of different purposes: research, presentations, movies, investigations, revision, quizzes, essays and Geographic Information Systems (GIS).

At present netbooks are mainly used as a research tool to help students gain up-to-date information on case studies and geographical stories in the news. They are also used by students in lessons to type up notes, preparations and for revision. We plan to use netbooks even more in the future to teach them how to use GIS software. We also use netbooks for the controlled assessments (Fieldwork Focus and Geographical Investigation).

### **Moodle:**

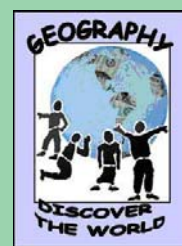
Geography students should be using Moodle regularly to access key documents to support homework and controlled assessment. We have put assessment help sheets and research links on Moodle.

### **Tips:**

We would encourage students to set the BBC as their homepage or regularly check news websites to keep up-to-date with geographical issues in the news. This will enable them to include recent case studies (examples) in their exams. When students are preparing for exams we will launch the geography Facebook page – this proved very popular and useful last year with our exam students.

### **Essential websites:**

[www.bbc.co.uk/schools/gcsebitesize/geography/](http://www.bbc.co.uk/schools/gcsebitesize/geography/)  
[www.bbc.co.uk/news/](http://www.bbc.co.uk/news/)  
[www.s-cool.co.uk/gcse/geography](http://www.s-cool.co.uk/gcse/geography)  
[www.geography.learnontheinternet.co.uk/gcse/index.html](http://www.geography.learnontheinternet.co.uk/gcse/index.html)  
[www.geography.learnontheinternet.co.uk/gcse/index.html](http://www.geography.learnontheinternet.co.uk/gcse/index.html)  
[mapzone.ordnancesurvey.co.uk/mapzone/](http://mapzone.ordnancesurvey.co.uk/mapzone/)



## Learning Support

ICT is an essential tool in learning support. A range of programmes are used with netbooks, laptops and Alphasmarts. Literacy and numeracy programmes help to improve skills. Students with netbooks nearly always use them in their withdrawal time. The netbooks promote independent learning, particularly in areas of research, homework and word processing.

The Learning Support Faculty continues to encourage the use of netbooks.



### **Websites:**

[www.junglememory.com](http://www.junglememory.com) is a working memory tool which some parents might like to subscribe to and use on a daily basis with their child. Parents should contact Mr Wootton should they wish to either find out more about it, or let him know that they're using it.

## Crofton Christmas Concerts 2011

Once again the fantastic students from Crofton School are starring in the annual Christmas concerts at Holy Rood Church, Stubbington on Tuesday 13<sup>th</sup> and Wednesday 14<sup>th</sup> December (both nights starting at 7:00 pm). Tickets cost £2.50 each and can be purchased from the school Finance Office.

There will be approximately 200 musicians involved in two orchestras, choir, jazz band, Colla Voce (senior choir), string group, guitar group, clarinet group, flute group, saxophone group and rock band as well as Christmas readings and carols.

Students have been practising extremely hard this term and are sure to put on an excellent show. We all look forward to seeing you there!

Mr Oliver

